



# GAT MONTHLY MEMBERSHIP PROGRESS REPORT

Results as of: 5/31/2022

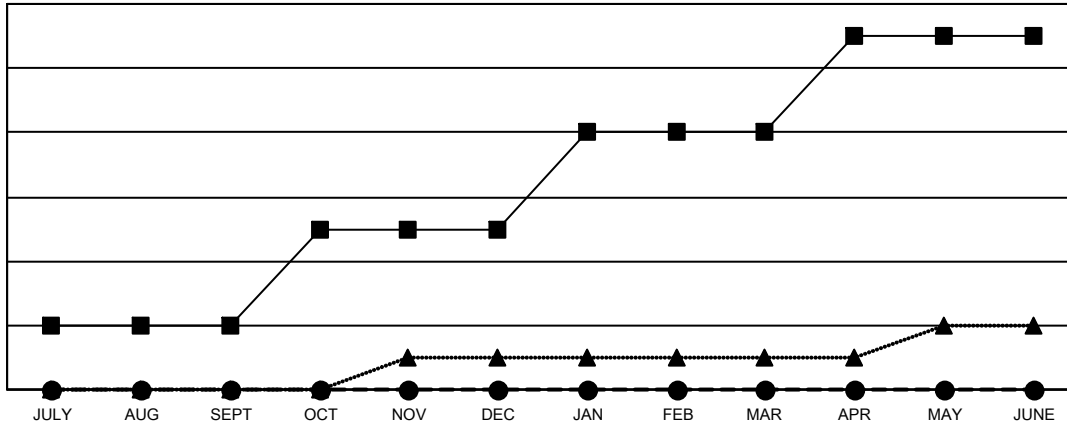
Multiple District 31

LOCATION: NORTH CAROLINA

Clubs			
RESULTS FOR 2021-2022			
QUARTER	NEW CLUB GOAL	NEW CLUBS	DROPPED CLUBS
JULY/AUG/SEPT	2	0	4
OCT/NOV/DEC	3	0	1
JAN/FEB/MAR	3	0	3
APR/MAY/JUNE	3	0	0

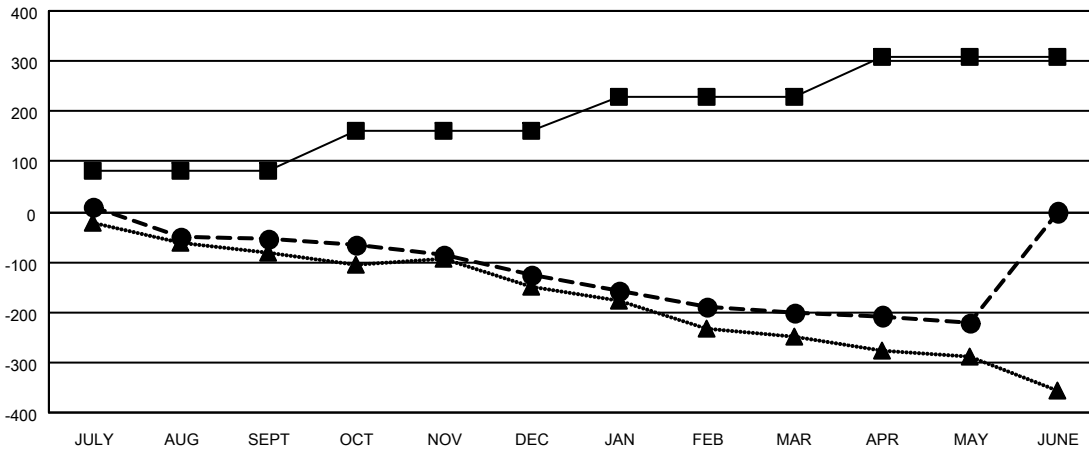
Members			
RESULTS FOR 2021-2022			
QUARTER	MEMBER GROWTH NET GOAL	MEMBER GROWTH ACTUAL	DROPPED MEMBERS ACTUAL (including transfers)
JULY/AUG/SEPT	82	130	171
OCT/NOV/DEC	80	143	170
JAN/FEB/MAR	67	115	170
APR/MAY/JUNE	80	85	97

GOALS AND ACTUAL NEW CLUBS CUMULATIVE



- - CURRENT YEAR GOALS FOR NEW CLUBS
- - CURRENT YEAR ACTUAL NEW CLUBS
- ▲ - LAST YEAR ACTUAL NEW CLUBS

GOALS AND ACTUAL MEMBERS CUMULATIVE



- - MEMBER GROWTH NET GOAL
- - MEMBER GROWTH ACTUAL
- ▲ - LAST YEAR MEMBERSHIP ACTUAL

<b>DROPPED CLUBS: 8</b>	126 CLUBS OF 263 ADDED 1 OR MORE NEW MEMBERS	<b>GENDER DISTRIBUTION</b>
<b>DROPPED MEMBERS</b>	<a href="#">CLICK HERE FOR CUMULATIVE MEMBERSHIP DATA</a>	MALE 3,223 (66.96%)
DECEASED 105		FEMALE 1,590 (33.04%)
CLUB CANCELLED 80		NON BINARY 0 (0.00%)
OTHER 423		PREFER NOT TO ANSWER 0 (0.00%)
<b>TOTAL 608</b>		<b>TOTAL FAMILY UNIT MEMBERS 1,089</b>
		FAMILY MEMBERS PAYING HALF DUES 557